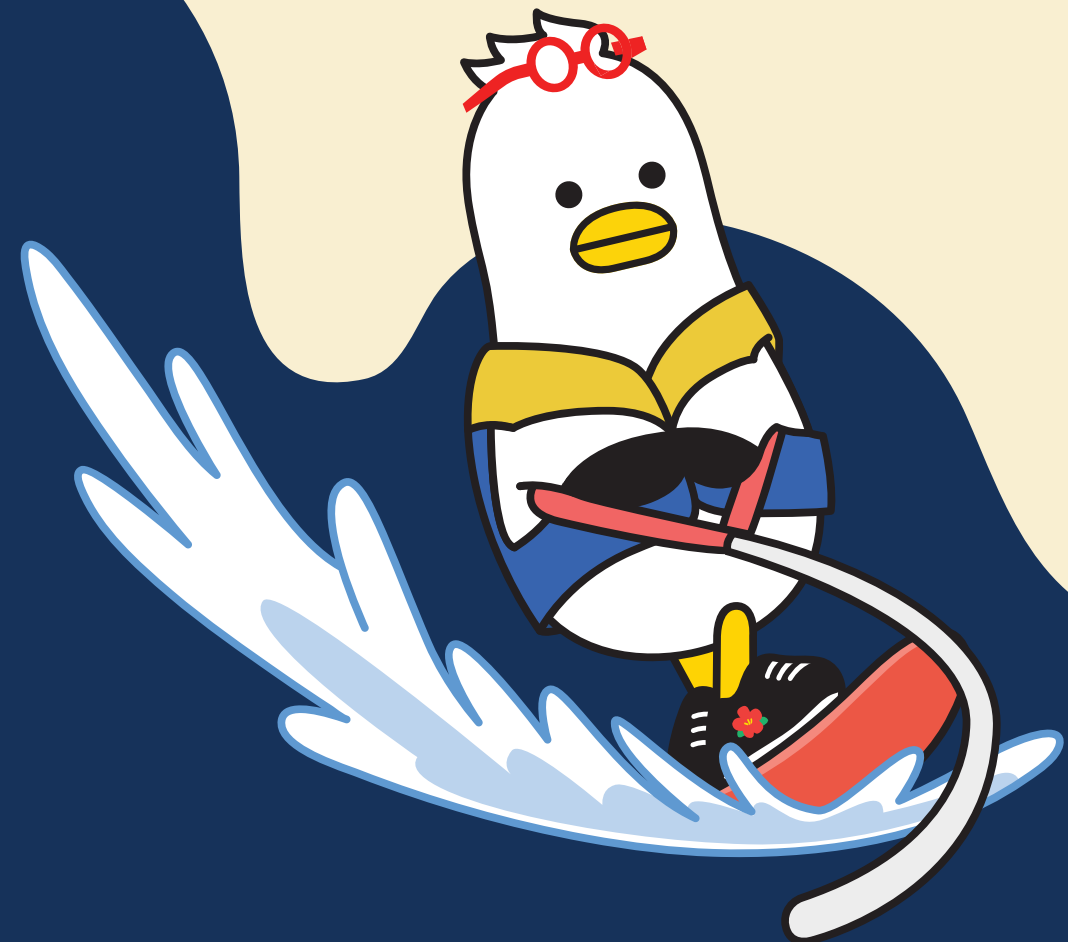


# The Lost Mail Mystery

## Workbook



The Lost Mail Mystery ..... 3p

1. Words ..... 4p

2. Story ..... 5p

3. Phonics ..... 6p

4. Review1 ..... 7p

5. Review2 ..... 8p

6. I can say ..... 9p



# WORDS

Look and circle the correct words.

1



latter letter

3



package tape

5



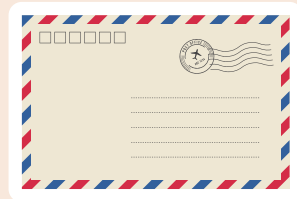
library post office

7



rain boots sneakers

2



post card gift card

4



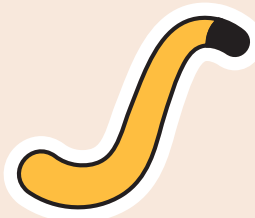
stamp stomp

6



mailman teacher

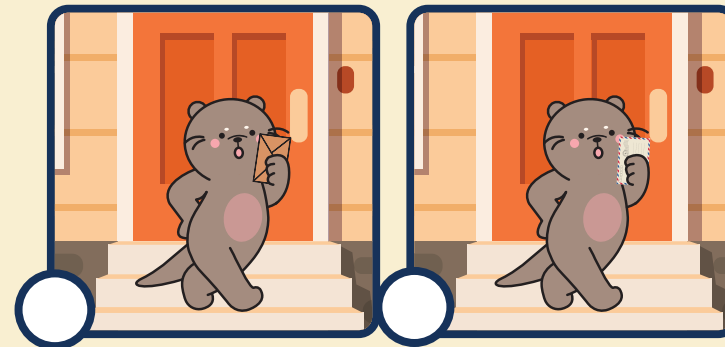
8



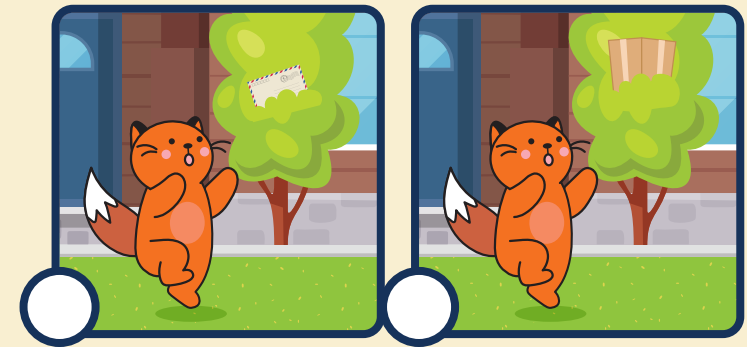
mail tail

# STORY

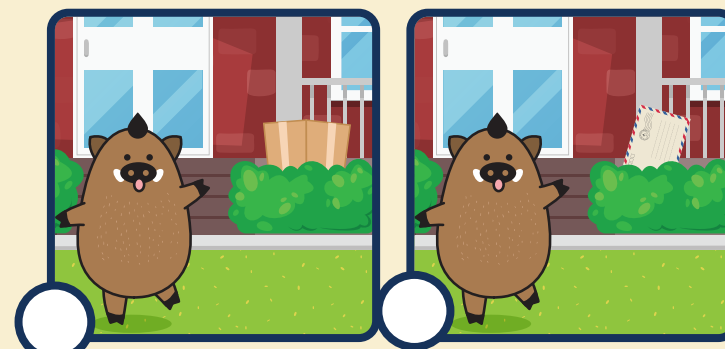
Read and choose the right picture.



One day, Otto finds a letter on his doorstep.



When he arrives, Otto and Roo see a postcard hanging from a tree branch.



When they arrive, they see a package in the bushes.



They see the mailman looking worried.

Look and trace the letters.

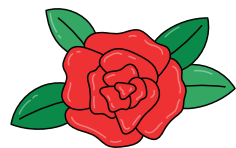
\_o\_e



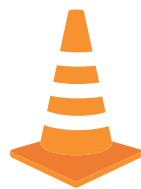
nose



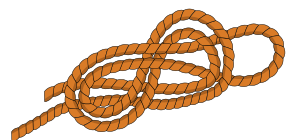
home



rose



cone



rope



hole

Circle the pictures of words with the spelling '\_o\_e'.



# REVIEW 1

Draw a line to the post office and say the words.



## REVIEW 2

Write down the right words from the box.

package / postcard / letter / mailman

1. One day, Otto finds a \_\_\_\_\_ on his doorstep.
2. Otto and Roo see a \_\_\_\_\_ hanging from a tree branch.
3. When Otto and Roo arrives at Hoggy's house, they all see a \_\_\_\_\_ in the bushes.
4. Then, they see the \_\_\_\_\_ looking worried.

Circle Yes or No.

1. Otto finds a letter for him.
2. On the way to the post office, Otto, Roo, and Hoggy see a fireman.
3. There is a big hole in the mail bag.

Yes

No

Yes

No

Yes

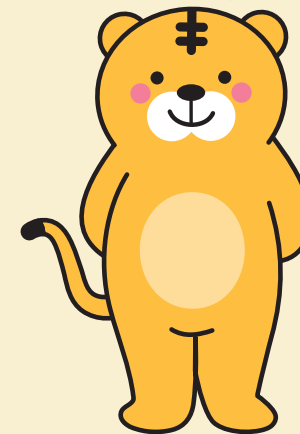
No

## I CAN SAY

Ask and answer with a partner.

What can we  
do at the  
post office?

We can  
\_\_\_\_\_.



Design your own stamp and  
describe it to your partner.

